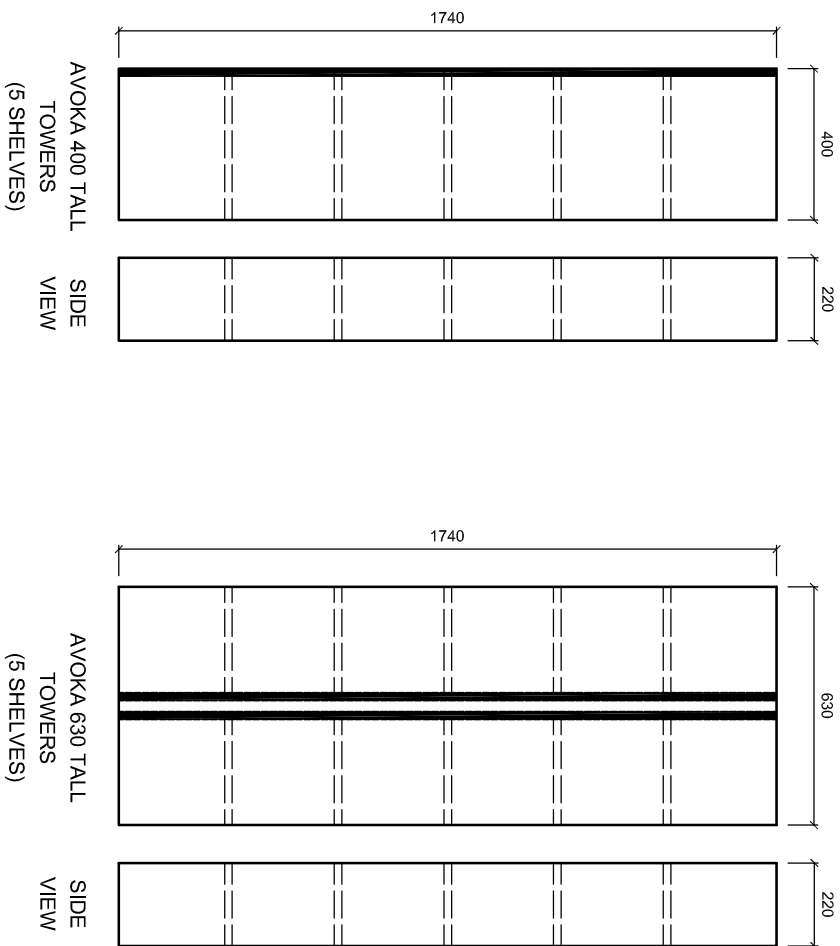


# AVOKA TALL TOWER 400 & 630



**Contact:**

2 Enterprise Drive (off Corban Avenue),  
Henderson,  
Auckland,  
NEW ZEALAND

Phone: 64 (9) 837-4276

Fax: 64 (9) 837-4325

Email: [info@stmichel.co.nz](mailto:info@stmichel.co.nz)

Website: [www.stmichel.co.nz](http://www.stmichel.co.nz)

**Drawing Title**

**AVOKA TALL\_400**  
**AVOKA\_TALL\_630**

**Note:**

Softclose doors  
Options: colours: gloss white, durashell woodgrain,  
woodgrain

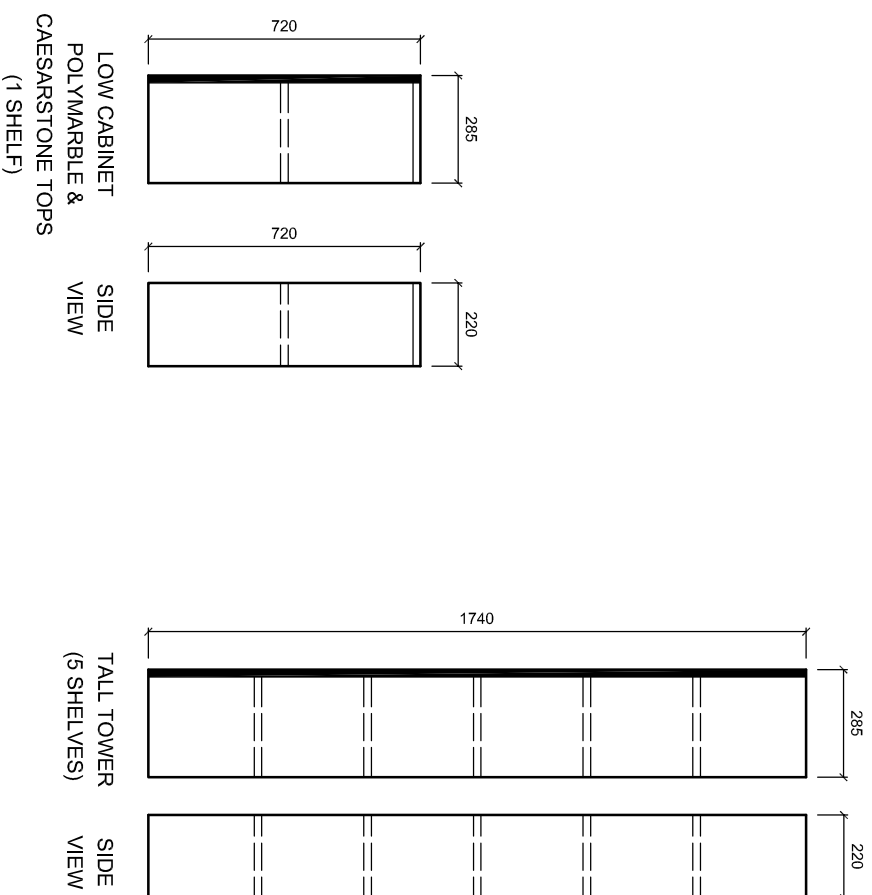
**Files Attached:**

File Name: STORAGE\_FURNITURE.DWG Scale: 1:1

Date Drawn: October 2008 Job No:

Drawn By: NG Revision: **A**

# AVOKA CABINET 285



CONTACT

2 Enterprise Drive (off Corban Avenue),  
Henderson,  
Auckland,  
NEW ZEALAND

Phone: 64 (9) 837-4276

Fax: 64 (9) 837-4325

Email: [info@stmichael.co.nz](mailto:info@stmichael.co.nz)

Website: [www.stmichael.co.nz](http://www.stmichael.co.nz)

Drawing Title

**AVOKA CABINET\_285**  
**AVOKA\_TALL\_285**

NOTE

Softclose doors  
Options: colours, gloss white, durashell woodgrain,  
woodgrain

XREF ATTACHED

FILE NAME	SCALE	DATE	BY	REVISION
STORAGE_FURNITURE.DWG	1:20	October 2008	NG	A