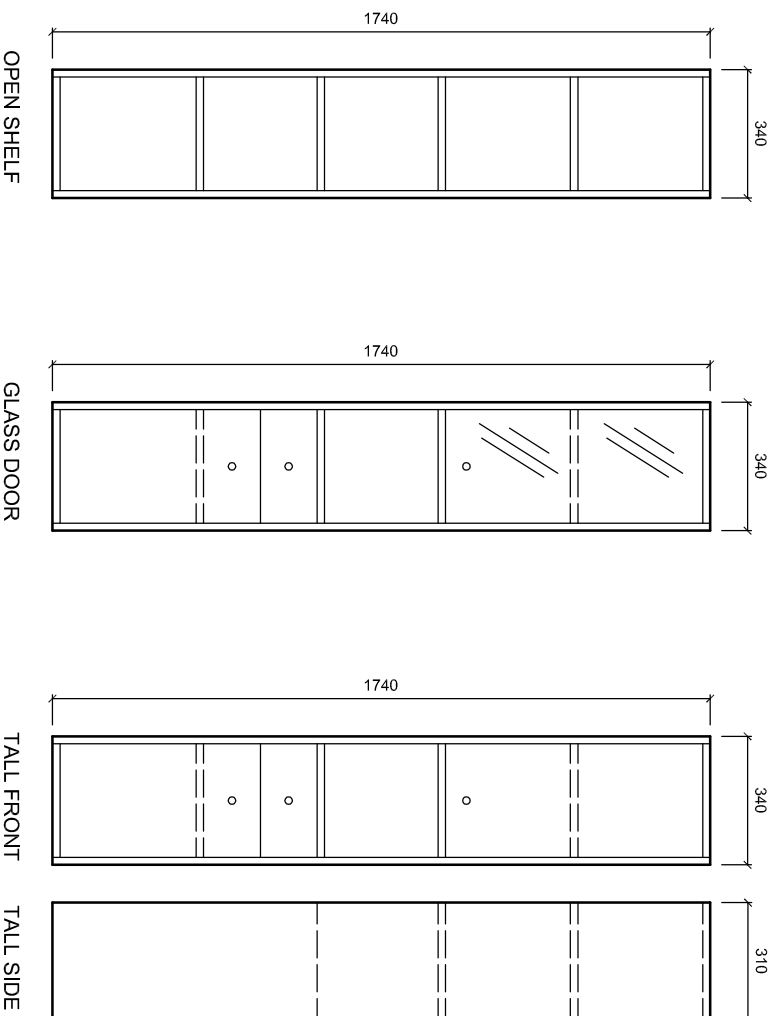


# NOVARA CABINET 340



**Contact:**

2 Enterprise Drive (off Corban Avenue),  
Henderson,  
Auckland,  
NEW ZEALAND

**Phone:** 64 (9) 837-4276

**Fax:** 64 (9) 837-4325

**Email:** [info@stmichel.co.nz](mailto:info@stmichel.co.nz)

**Website:** [www.stmichel.co.nz](http://www.stmichel.co.nz)

**Drawing Title:**

## NOVARA\_CABINET\_340

**Note:**

Please specify right or left hand hinges when ordering.  
Extra charge for white high gloss option.

**Xref's Attached:**

**File Name:** STORAGE\_FURNITURE.DWG  
**Scale of A1:** 1:20

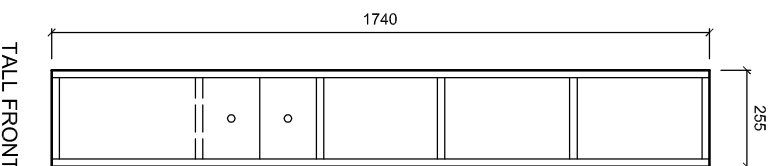
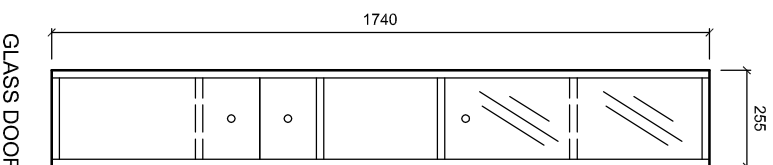
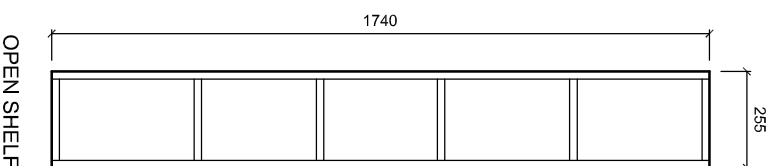
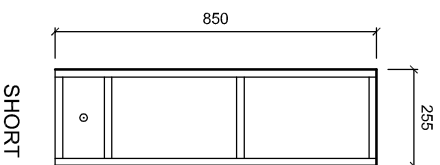
**Date Drawn:** July 2008  
**Job No:**

**Drawn By:** NS  
**Revision:** A

COMPANY

**st:michel**  
BATHROOMWARE

# NOVARA CABINET 255



**Contact:**

2 Enterprise Drive (off Corban Avenue),  
Henderson,  
Auckland,  
NEW ZEALAND

**Phone:** 64 (9) 837-4276

**Fax:** 64 (9) 837-4325

**Email:** [info@stmichel.co.nz](mailto:info@stmichel.co.nz)

**Website:** [www.stmichel.co.nz](http://www.stmichel.co.nz)

**Drawing Title:**

## NOVARA\_CABINET\_255

**Note:**

Please specify right or left hand hinges when ordering.  
Extra charge for white high gloss option.

**Xref Attached:**

**File Name:** STORAGE\_FURNITURE.DWG  
**Scale:** 1:20

**Date Drawn:** July 2008  
**Job No:**

**Drawn By:** NS  
**Revision:** A