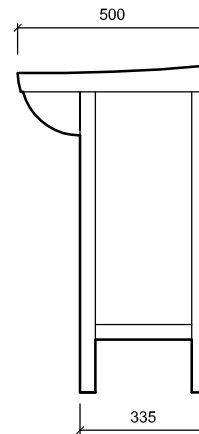
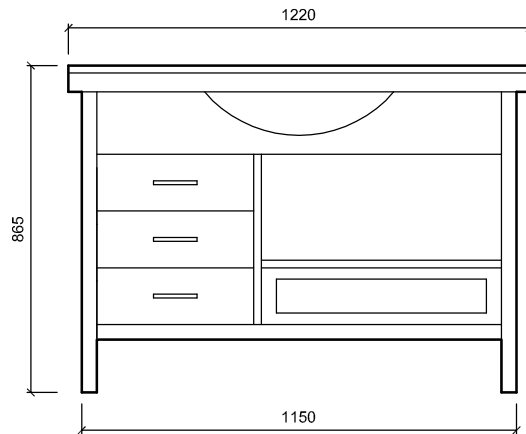
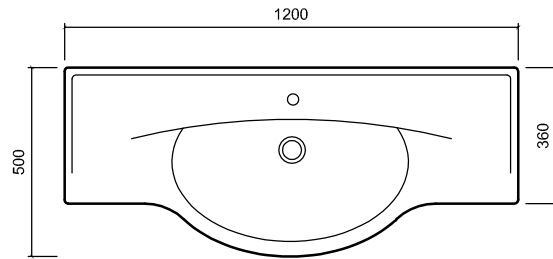


SHAKER 1200



COMPANY

st.michel
BATHROOMWARE

Contact:

2 Enterprise Drive (off Corban Avenue),
Henderson,
Auckland,
NEW ZEALAND

Phone:

64 (9) 837-4276

Fax:

64 (9) 837-4325

Email:

info@stmichel.co.nz

Website:

www.stmichel.co.nz

Drawing Title:

SHAKER_1200

Note:

Shaker with Hola Forma Basin
Dark Oak and Beech available

Xrefs Attached:

File Name:

SHAKER.DWG

Scale at A4:

1:20

Date Drawn:

April 2008

Job No:

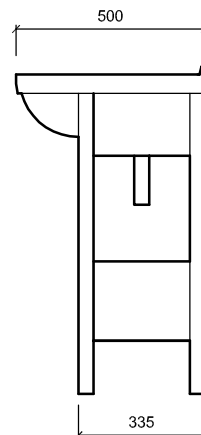
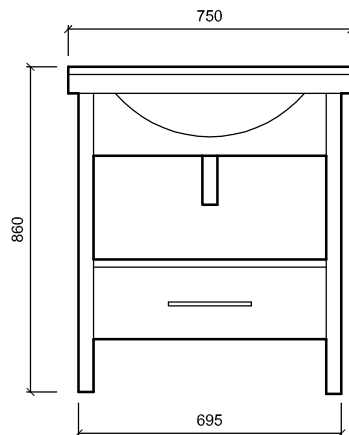
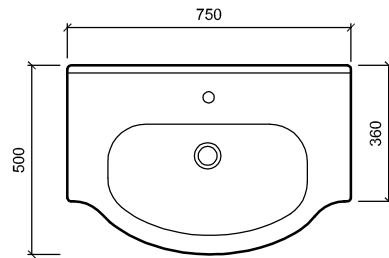
Drawn By:

NG

Revision:

A

SHAKER WASHSTAND 750



COMPANY

st.michel
BATHROOMWARE

Contact:

2 Enterprise Drive (off Corban Avenue),
Henderson,
Auckland,
NEW ZEALAND

Phone: 64 (9) 837-4276

Fax: 64 (9) 837-4325

Email: info@stmichel.co.nz

Website: www.stmichel.co.nz

Drawing Title:

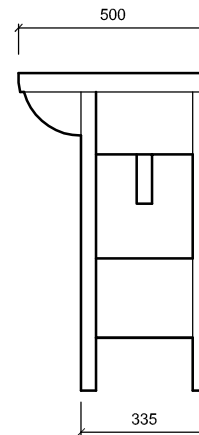
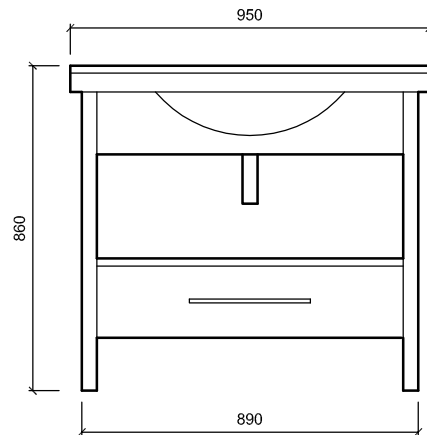
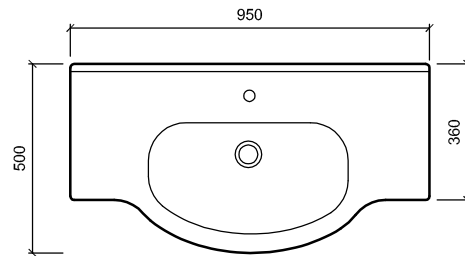
SHAKER_WASHSTAND_750

Note:

Shaker Washstand 750 with Piani Basin (Standard)
or Zeus, Hola Forma, Domus Basin.
Dark Oak and Beech available

Xrefs Attached:	File Name:	Scale of A4:
	SHAKER.DWG	1:20
	Date Drawn:	Job No:
	April 2008	
	Drawn By:	Revision:
	NG	A

SHAKER WASHSTAND 950



COMPANY

st.michel
BATHROOMWARE

Contact:

2 Enterprise Drive (off Corban Avenue),
Henderson,
Auckland,
NEW ZEALAND

Phone: 64 (9) 837-4276

Fax: 64 (9) 837-4325

Email: info@stmichel.co.nz

Website: www.stmichel.co.nz

Drawing Title:

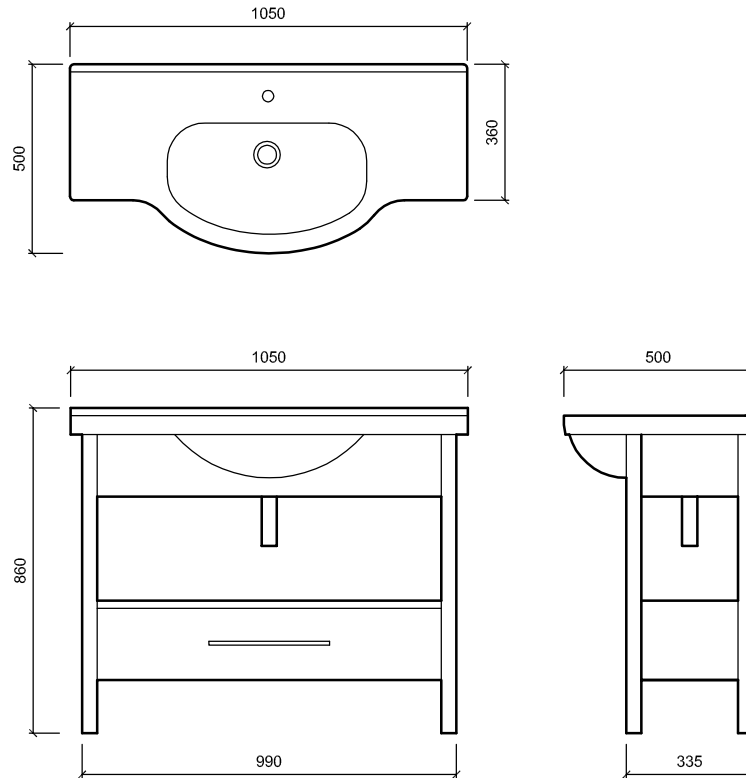
SHAKER_WASHSTAND_950

Note:

Shaker Washstand 950 with Piani Basin (Standard)
or Zeus, Hola Forma, Domus Basin.
Dark Oak and Beech available

Xrefs Attached:	File Name:	Scale at A4:
	SHAKER.DWG	1:20
Date Drawn:	April 2008	Job No:
	Drawn By:	Revision:
NG	A	

SHAKER WASHSTAND 1050



COMPANY

st.michel
BATHROOMWARE

Contact:

2 Enterprise Drive (off Corban Avenue),
Henderson,
Auckland,
NEW ZEALAND

Phone: 64 (9) 837-4276

Fax: 64 (9) 837-4325

Email: info@stmichel.co.nz

Website: www.stmichel.co.nz

Drawing Title:

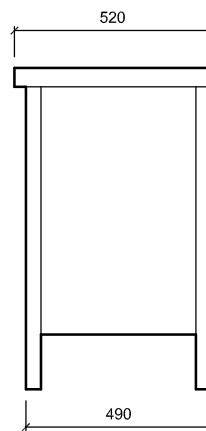
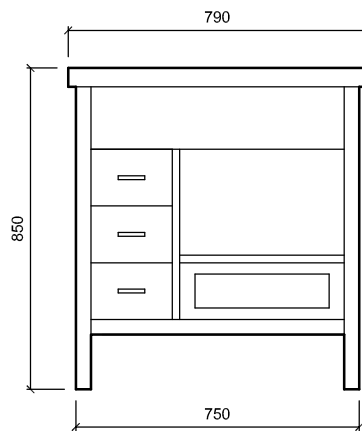
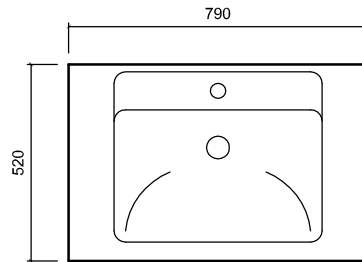
SHAKER_WASHSTAND_1050

Note:

Shaker Washstand 1050 with Piani Basin (Standard)
or Zeus, Hola Forma, Domus Basin.
Dark Oak and Beech available

Xrefs Attached:	File Name:	Scale at A4:
	SHAKER.DWG	1:20
	Date Drawn:	Job No:
	April 2008	
Drawn By:	Revision:	
NG		A

SHAKER ELEGANCE 800



COMPANY

st.michel
BATHROOMWARE

Contact:

2 Enterprise Drive (off Corban Avenue),
Henderson,
Auckland,
NEW ZEALAND

Phone:

64 (9) 837-4276

Fax:

64 (9) 837-4325

Email:

info@stmichel.co.nz

Website:

www.stmichel.co.nz

Drawing Title:

SHAKER_ELEGANCE_800

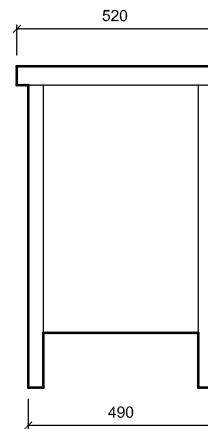
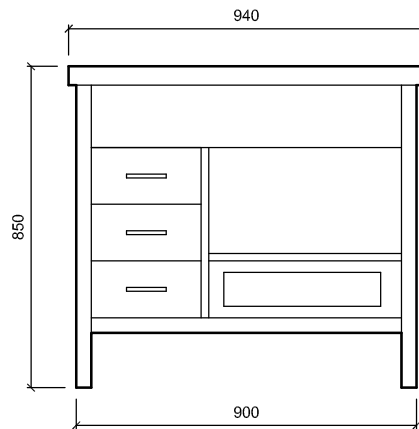
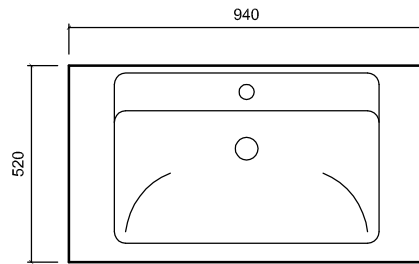
Note:

Shaker Elegance 800 with Elegance Basin
Dark Oak and Beech available

Xrefs Attached:

File Name:	SHAKER.DWG	Scale at A4:	1:20
Date Drawn:	April 2008	Job No:	
Drawn By:	NG	Revision:	A

SHAKER ELEGANCE 950



COMPANY

st.michel
BATHROOMWARE

Contact:

2 Enterprise Drive (off Corban Avenue),
Henderson,
Auckland,
NEW ZEALAND

Phone:

64 (9) 837-4276

Fax:

64 (9) 837-4325

Email:

info@stmichel.co.nz

Website:

www.stmichel.co.nz

Drawing Title:

SHAKER_ELEGANCE_950

Note:

Shaker Elegance 950 with Elegance Basin
Dark Oak and Beech available

Xrefs Attached:

File Name:

SHAKER.DWG

Scale at A4:

1:20

Date Drawn:

April 2008

Job No:

Drawn By:

NG

Revision:

A