

10. DRAWER INSTALLATION & ALIGNMENT / A-TYPE DRAWER

See video instructions at www.stmichel.co.nz

10.1 A Type Drawer



Fig. 10A
A Type Drawer

NOTE: A-type drawer could have a round or square gallery rail

If the drawer system instructions are not displayed in this booklet please refer to stmichel.co.nz or give us a call on 09 837 4276

10.2 Removing Drawer (A-Type)

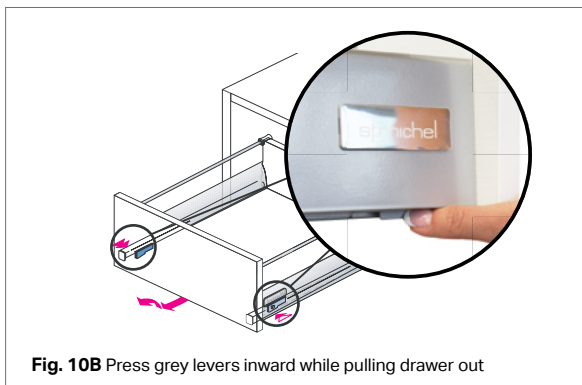


Fig. 10B Press grey levers inward while pulling drawer out

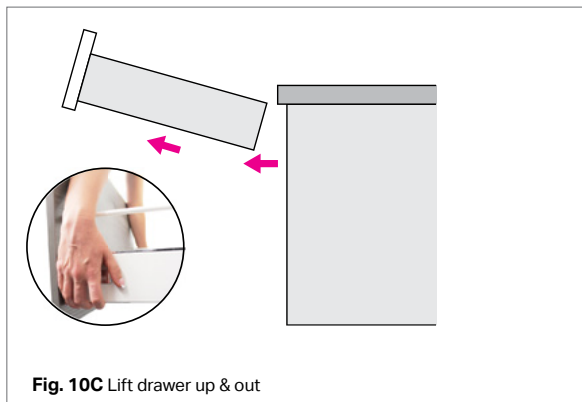


Fig. 10C Lift drawer up & out

10.3 Inserting Drawer (A-Type)

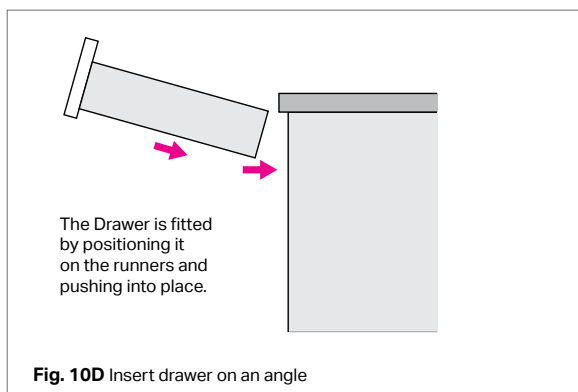


Fig. 10D Insert drawer on an angle

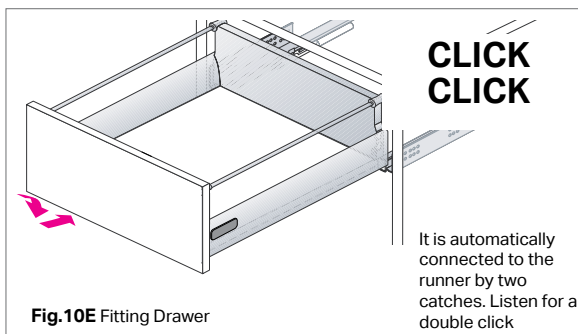


Fig. 10E Fitting Drawer

10.4 Adjustment (A-Type)

Adjust drawer front as required

WARNING: Avoid pushing the blue button - this will cause the drawer front panel to detach

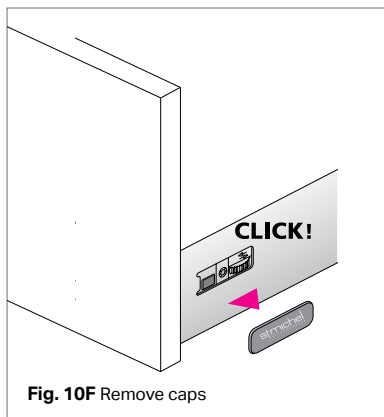


Fig. 10F Remove caps

Remove caps for adjustment & replace when you have finished (Fig. 10F)

10. DRAWER INSTALLATION & ALIGNMENT / A-TYPE DRAWER

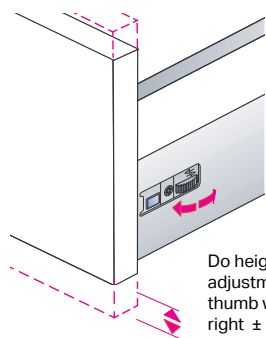


Fig. 10G Drawer front height adjustment

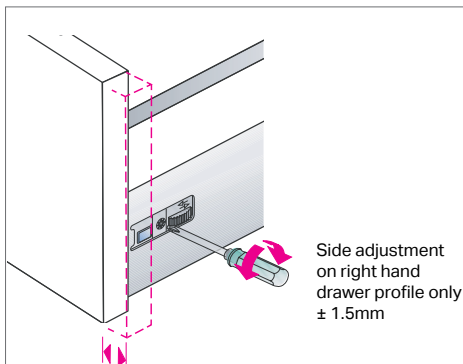


Fig. 10H Drawer front side adjustment

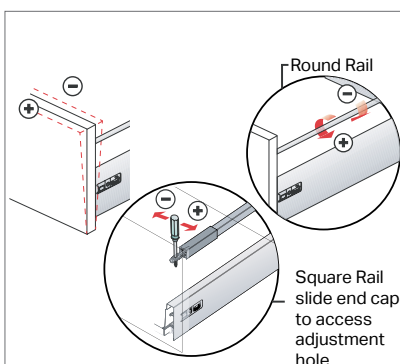


Fig. 10I Drawer front tilt adjustment

Use screw supplied (taped under drawer) to permanently fix adjustment in place. This will close any gap at the front of drawer

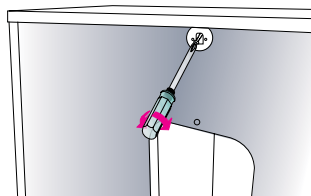


Fig. 10J Permanently set adjustment

10.5 Push to open adjustment

Additional adjustment to A-type drawer with Push-to-open

The Push-to-open drawer requires an activating gap to operate correctly.

Adjust this as required.

See **Fig. 10K & 10L**.

Fig. 10K Activating gap

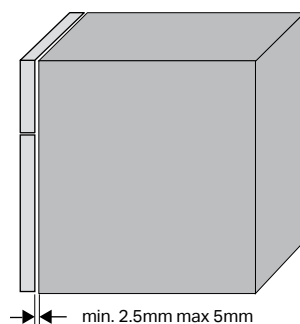


Fig. 10L Push-to-open activating gap adjustment

