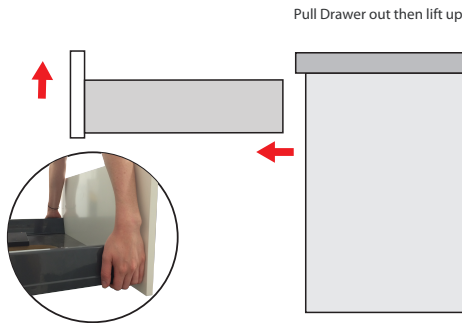


# Drawer Box Installation (Discontinued)

## D - Type

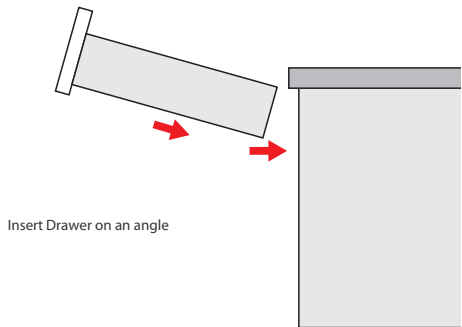
### Removing Drawer

#### 1 Removing Drawer

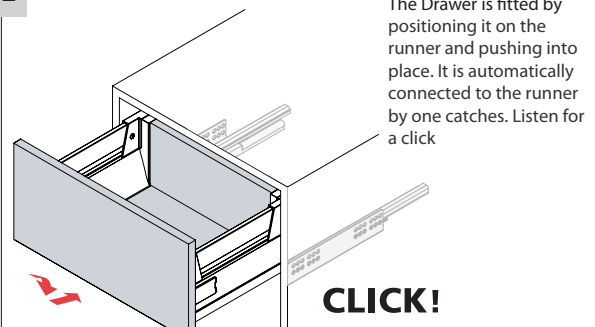


### Inserting Drawer

#### 1 Inserting Drawer



#### 2 Fitting Drawer

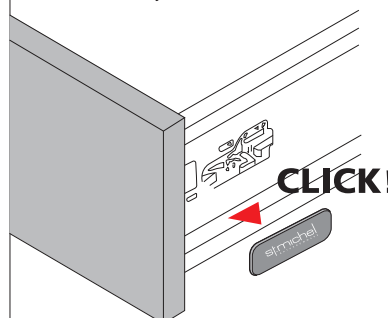


### Adjustment

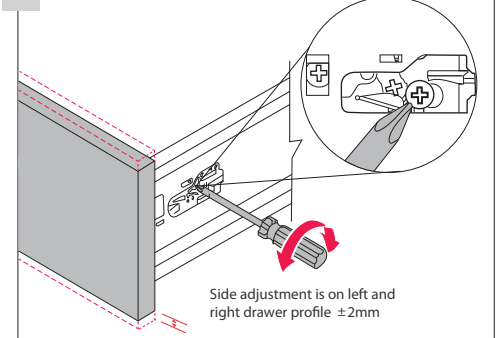
## Adjust Drawer Front as Required

Please use a phillips head screw driver to make adjustments

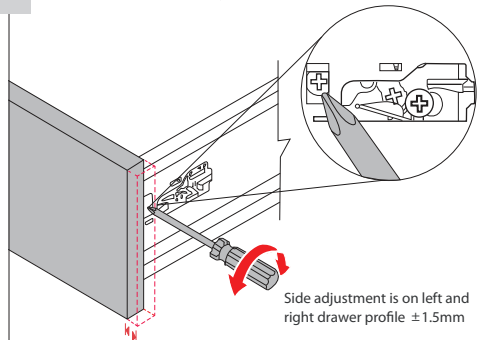
#### 1 Remove Chrome branding for Drawer Adjustment



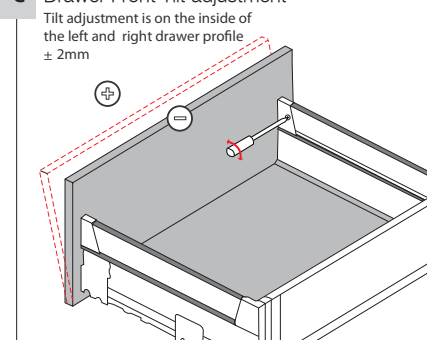
#### a Drawer Front Height Adjustment



#### b Drawer Front Side Adjustment



#### c Drawer Front Tilt adjustment



#### 2 Click Cover Cap to Drawer sides

