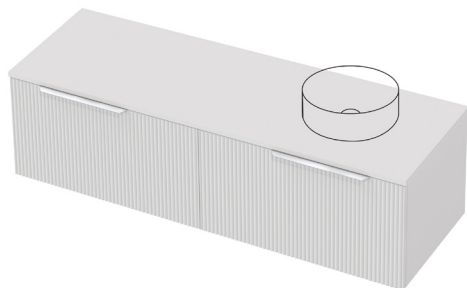


# Flo 50 Benchtop 1500R Wall 2 Drawer

## CABINET SPECIFICATION

exclusive to  
**plumbingworld**



### Product Features

|                      |   |
|----------------------|---|
| Product Code         | Benchtop Vanity / 9827BT<br>Benchtop Vanity + Concealed Drawer Left / 9828BT<br>Benchtop Vanity + Concealed Drawer Right / 9829BT<br>Benchtop Vanity + Concealed Drawer Left & Right / 9830BT |
| Product Description  | Flo - Wall - 1500R  |
| Cabinet Material*    | Durashell®  |
| Drawer Configuration | 2 Drawer  |

Notes: Drawings depict cabinet only and display all concealed drawers. Plumbing positioning still applies if your cabinet code is listed in this document and your concealed drawer configuration differs from image shown.  
Vanity includes Onda Storage system Type A or Type B, refer charts.

\*Both the cabinet front and sides are made of Durashell®, except for Baroque Woodgrain and Classic White Satin, which feature Durashell® fronts and matching Melamine sides (with Aqua Edge®).

### Cabinet Finishes Available

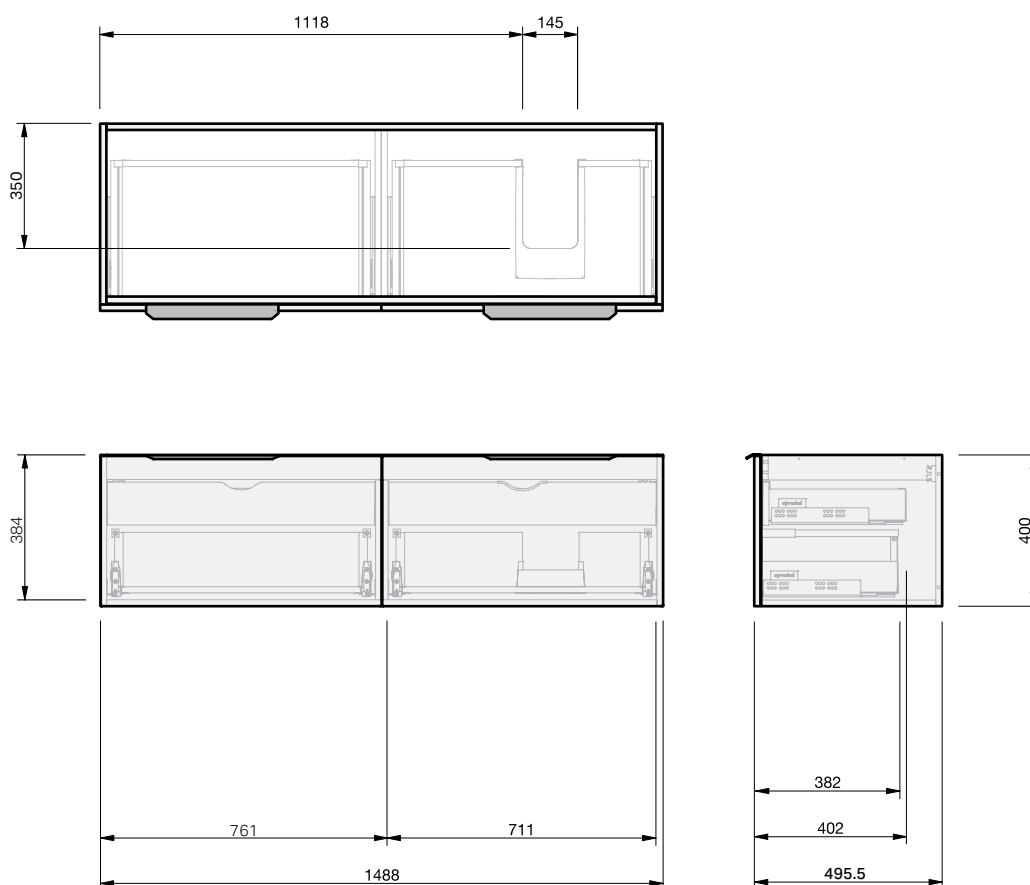


**Flo F2 Finish** 1. Classic White Satin,  
**Flo F3 Finish** 2. Black Satin, 3. Lana Grey Satin, 4. Slate Matte,  
5. Pistachio Matte, 6. Villa Blue Matte, 7. Baroque Woodgrain

### Handle Colours Available



**Soul Handle** 1. Matte Black, 2. Brushed Brass, 3. Brushed Nickel, 4. Gunmetal,  
5. Chrome, 6. Matte White, 7. Brushed Copper.



**IMPORTANT NOTE:** Throughout this guide, dimensions may vary by  $\pm 2$ mm. Please read the installation manual for detailed information on installing the product. St. Michel pursues a policy of continuing improvement in design and manufacturing of its products. The right is therefore reserved to vary specifications without notice.

**st.michel**  
BATHROOMWARE

phone (09) 837 4276 email sales@stmichel.co.nz stmichel.co.nz

# Flo 50 Benchtop

## TOP SPECIFICATION

| Top Thickness (mm) <sup>Ⓕ</sup> |            |      |  |  |  |
|---------------------------------|------------|------|--|--|--|
| Cabinet                         | Cherry Pie | HPL  |  |  |  |
| Flo 50 Benchtop                 | 20.5       | 17.5 |  |  |  |

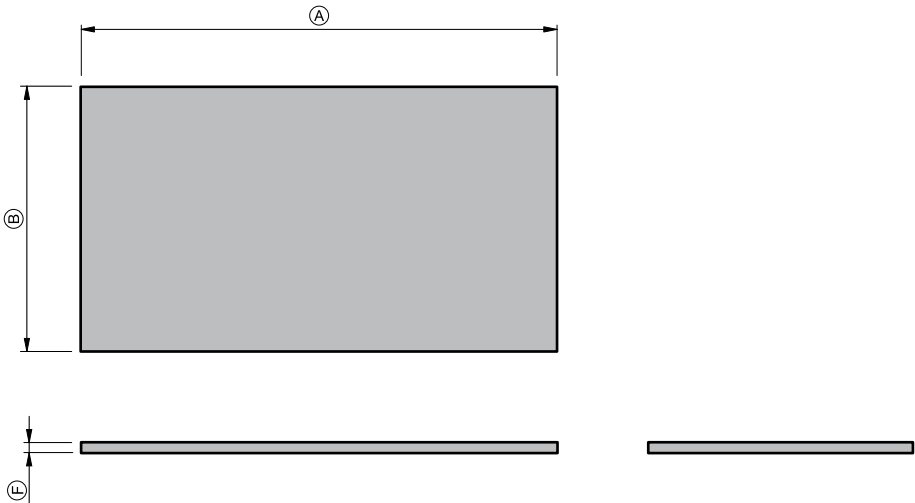
| Product Dimensions (mm) | Ⓐ    | Ⓑ   | Ⓒ | Ⓓ | Ⓔ |
|-------------------------|------|-----|---|---|---|
| Flo 50 Benchtop - 700   | 700  | 505 | - | - | - |
| Flo 50 Benchtop - 900   | 900  | 505 | - | - | - |
| Flo 50 Benchtop - 1200  | 1200 | 505 | - | - | - |
| Flo 50 Benchtop - 1500  | 1500 | 505 | - | - | - |
| Flo 50 Benchtop - 1800  | 1800 | 505 | - | - | - |

- The top must be sealed to the vanity unit with an acetic cured silicone sealant. Epoxy type sealants must not be used
- Tops can be drilled on site with a standard hole saw

### Benchtop Finishes Available



- HPL Woodgrain (BT1)** 1. Baroque, 2. Hamptons Elm, 3. Sovereign Oak, 4. Premium Oak - all with Aqua Edge®  
**HPL Soft-Matte (BT2)** 5. Black Soft-Matte, 6. Devious Soft-Matte, 7. Foxy Soft-Matte, 8. Minx Soft-Matte, 9. Wicked Soft-Matte - all with Aqua Edge®  
**HPL Smooth (BT2)** 10. White Concrete Smooth - with Aqua Edge®  
**Cherry Pie® Solid Surface (BT3)** 11. Bright White, 12. Sugar Cream, 13. Carrara, 14. Calacatta 15. Alabaster, 16. Grey Travertine.



**IMPORTANT NOTE:** Throughout this guide, dimensions may vary by ± 2mm. Please read the installation manual for detailed information on installing the product. St. Michel pursues a policy of continuing improvement in design and manufacturing of its products. The right is therefore reserved to vary specifications without notice.



phone (09) 837 4276 email [sales@stmichel.co.nz](mailto:sales@stmichel.co.nz) [stmichel.co.nz](http://stmichel.co.nz)