

# Mako 70 Laundry

## 900 Floor 2 Drawer - Undermount

### CABINET SPECIFICATION



Product Features	
Product Code	MK7090-2DR-U25-B
Product Description	Mako 70 Laundry - 900 Floor
Drawer Configuration	2 Drawer
Notes	Drawings depict cabinet, top and sink.
Sink	
Bowl type	Fabricated 1.2mm 304 brushed stainless steel
Bowl capacity	40L
Capacity to overflow	33.4L
Overflow/ flow rate	15.6L/min

Cabinet	
Storage type	All Mako drawer models supplied with Hettich German-made hardware
Adjustable levelling feet	Yes, adjusts up to 20mm
Side apertures for hoses	Yes, on both sides
Washing machine taps and shut-off valves / isolators	Included x2 (see Easy-Plumb Kit in next column)
Washing machine waste pipe	Included (see Easy-Plumb Kit in next column)
Cabinet color / finish	18x finishes
Cabinet material	EcoChoice certified timber, sustainably grown in New Zealand

#### Easy-Plumb Kit

\* Approximate height 360mm when fully assembled

#### Included with all Mako Laundry furniture.

##### Kit includes:

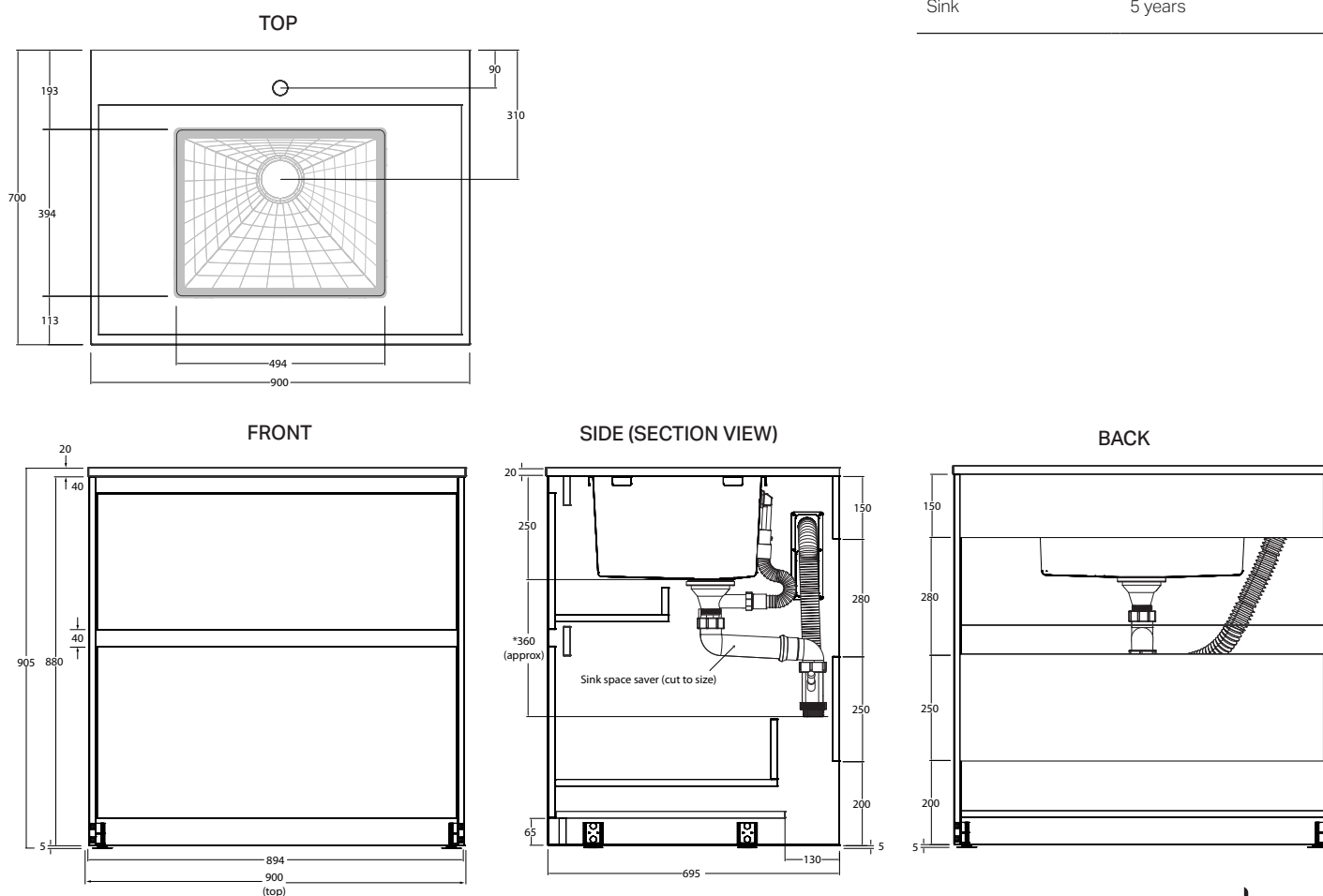
- Fabricated 1.2mm 304 brushed stainless steel laundry sink
- Waste body & overflow kit – EN274 standard
- 40 to 50mm adaptor
- WaterMark certified sink space saver (50mm)
- WaterMark certified rinse bypass kit – including Y Junction
- 50 to 40mm reducer (if required)
- 2 x WaterMark certified lead-free ¼ turn combo isolation taps

#### Dimensions & Weights

Product dimensions (mm)	900w x 905h x 700d
-------------------------	--------------------

#### Warranty

Tapware & Cabinet	5 years
Sink	5 years



**IMPORTANT NOTE:** Throughout this guide, dimensions may vary by  $\pm 2$ mm. Please read the installation manual for detailed information on installing the product. St. Michel pursues a policy of continuing improvement in design and manufacturing of its products. The right is therefore reserved to vary specifications without notice.

st.michel  
LAUNDRY

phone (09) 837 4276 email sales@stmichel.co.nz stmichel.co.nz