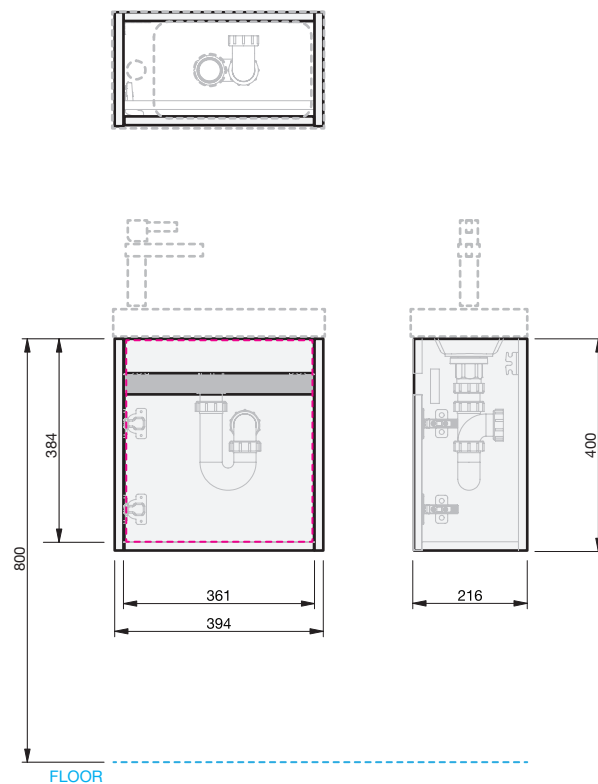


CABINET SPECIFICATION

Bella - 400 - Wall - 1 Door



Basin range (refer to applicable basin specification)



IDA

- Drawings depict cabinet only
- It is important to decide on what height you want your finished top surface from the floor, this will determine where your plumbing will be positioned.
- We suggest that you install your wall hung vanity between 830-950mm high to the finished top surface.
- Waste outlet positioned for standard bottle trap and pop up basin waste



30 YEARS



AQUAEDGE



SOFT
CLOSE

INDICATES PLUMBING -----

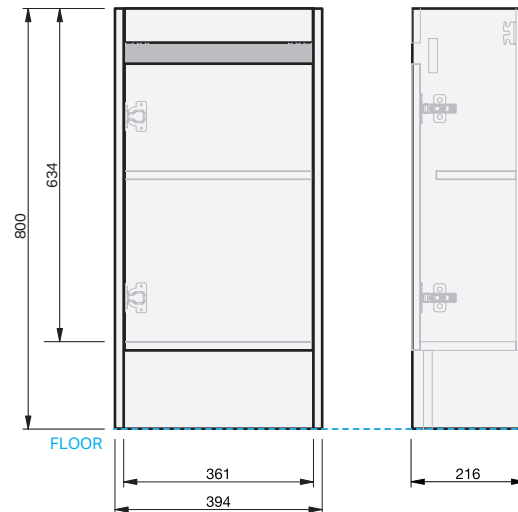
INDICATES FLOOR SURFACE -----

IMPORTANT NOTE: Throughout this guide, dimensions may vary by ± 2 mm. Please read the installation manual for detailed information on installing the product. St. Michel pursues a policy of continuing improvement in design and manufacturing of its products. The right is therefore reserved to vary specifications without notice. For full installation instructions visit stmichel.co.nz.

Date edited:

30/09/19

01/01



Basin range (refer to applicable basin specification)



IDA

- Drawings depict cabinet only
- Waste outlet positioned for standard bottle trap and pop up basin waste



INDICATES PLUMBING -----

INDICATES FLOOR SURFACE -----

IMPORTANT NOTE: Throughout this guide, dimensions may vary by ± 2 mm. Please read the installation manual for detailed information on installing the product. St. Michel pursues a policy of continuing improvement in design and manufacturing of its products. The right is therefore reserved to vary specifications without notice. For full installation instructions visit stmichel.co.nz.

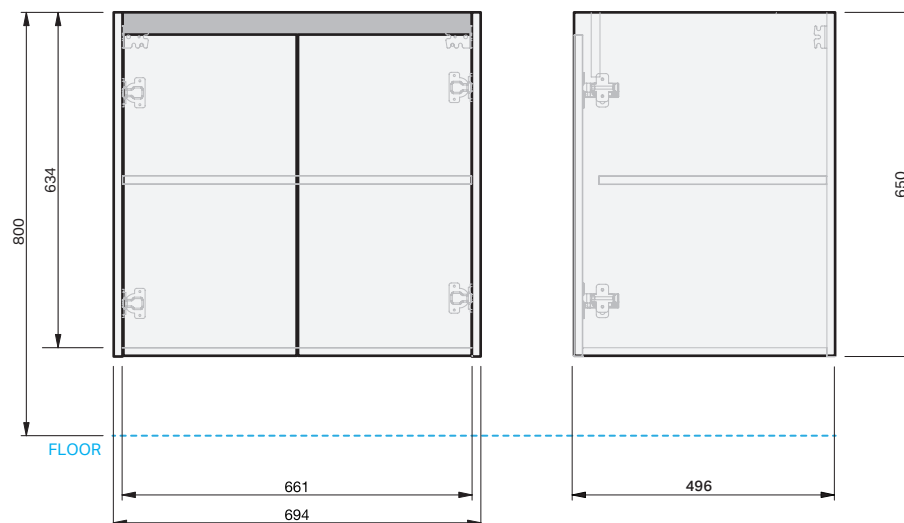
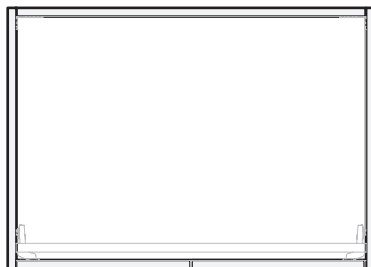
Date edited:

02/02/2024

01/01

CABINET SPECIFICATION

Bella - 700 - Wall - 2 Door



Basin range (refer to applicable basin specification)



LAURETTA

- Drawings depict cabinet only
- It is important to decide on what height you want your finished top surface from the floor, this will determine where your plumbing will be positioned.
- We suggest that you install your wall hung vanity between 830-950mm high to the finished top surface.
- Waste outlet positioned for standard bottle trap and pop up basin waste



30 YEARS



AQUAEDGE



SOFT
CLOSE

INDICATES PLUMBING -----

INDICATES FLOOR SURFACE -----

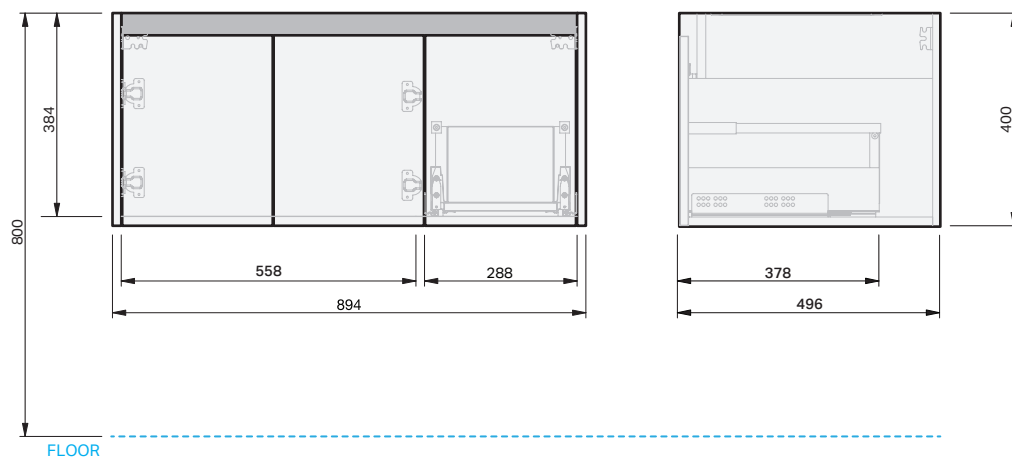
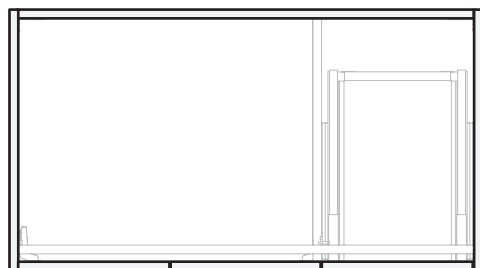
IMPORTANT NOTE: Throughout this guide, dimensions may vary by ± 2 mm. Please read the installation manual for detailed information on installing the product. St. Michel pursues a policy of continuing improvement in design and manufacturing of its products. The right is therefore reserved to vary specifications without notice. For full installation instructions visit stmichel.co.nz.

Date edited:

02/02/2024

CABINET SPECIFICATION

Bella - 900 - Wall - 2 Door 1 Drawer



Basin range (refer to applicable basin specification)



LAURETTA

- Drawings depict cabinet only
- It is important to decide on what height you want your finished top surface from the floor, this will determine where your plumbing will be positioned.
- We suggest that you install your wall hung vanity between 830-950mm high to the finished top surface.
- Waste outlet positioned for standard bottle trap and pop up basin waste



30 YEARS



AQUAEDGE



SOFT
CLOSE

INDICATES PLUMBING

INDICATES FLOOR SURFACE

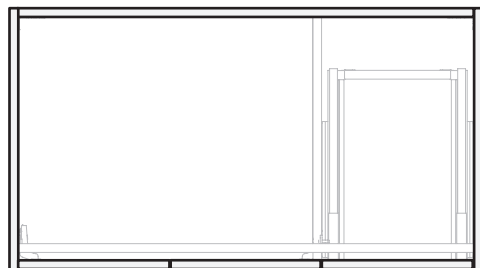
IMPORTANT NOTE: Throughout this guide, dimensions may vary by ± 2 mm. Please read the installation manual for detailed information on installing the product. St. Michel pursues a policy of continuing improvement in design and manufacturing of its products. The right is therefore reserved to vary specifications without notice. For full installation instructions visit stmichel.co.nz.

Date edited:

02/02/2024

CABINET SPECIFICATION

Bella - 900 - Wall - 2 Door 2 Drawer



Basin range (refer to applicable basin specification)



LAURETTA

- Drawings depict cabinet only
- It is important to decide on what height you want your finished top surface from the floor, this will determine where your plumbing will be positioned.
- We suggest that you install your wall hung vanity between 830-950mm high to the finished top surface.
- Waste outlet positioned for standard bottle trap and pop up basin waste



30 YEARS



AQUAEDGE



SOFT CLOSE

INDICATES PLUMBING

INDICATES FLOOR SURFACE

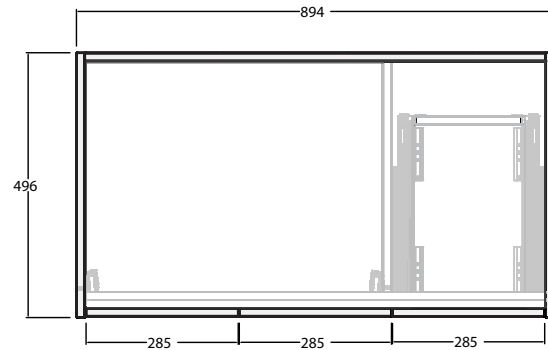
IMPORTANT NOTE: Throughout this guide, dimensions may vary by ± 2 mm. Please read the installation manual for detailed information on installing the product. St. Michel pursues a policy of continuing improvement in design and manufacturing of its products. The right is therefore reserved to vary specifications without notice. For full installation instructions visit stmichel.co.nz.

Date edited:

02/02/2024

CABINET SPECIFICATION

Bella - 900 - Floor - 2 Door 2 Drawer



Basin range (refer to applicable basin specification)



LAURETTA

- Drawings depict cabinet only
- It is important to decide on what height you want your finished top surface from the floor, this will determine where your plumbing will be positioned.
- We suggest that you install your wall hung vanity between 830-950mm high to the finished top surface.
- Waste outlet positioned for standard bottle trap and pop up basin waste



30 YEARS



AQUAEDGE



SOFT CLOSE

INDICATES PLUMBING -----

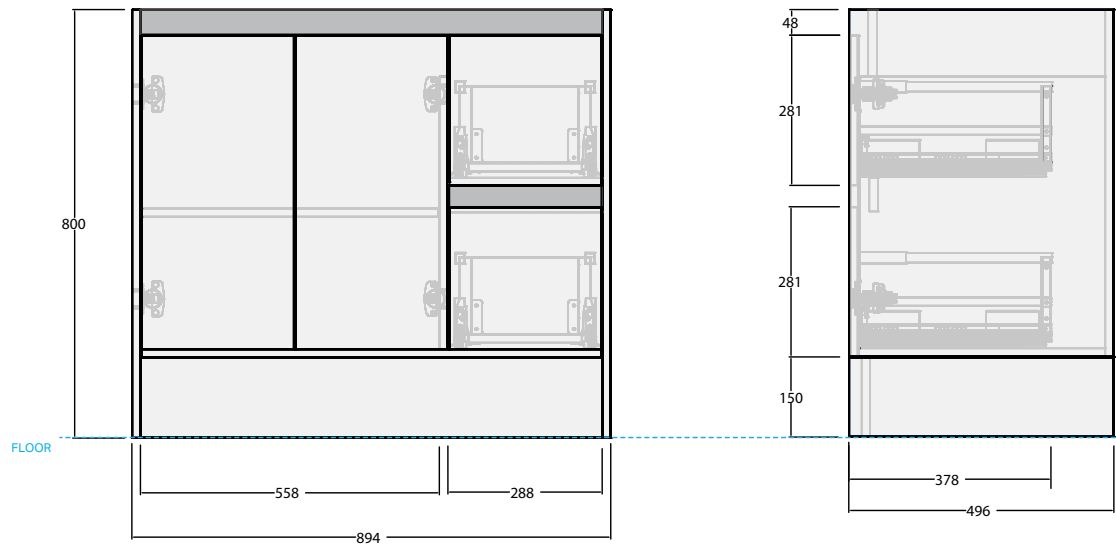
INDICATES FLOOR SURFACE -----

IMPORTANT NOTE: Throughout this guide, dimensions may vary by ± 2 mm. Please read the installation manual for detailed information on installing the product. St. Michel pursues a policy of continuing improvement in design and manufacturing of its products. The right is therefore reserved to vary specifications without notice. For full installation instructions visit stmichel.co.nz.

Date edited:

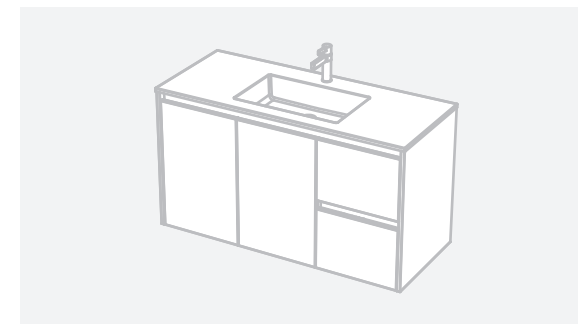
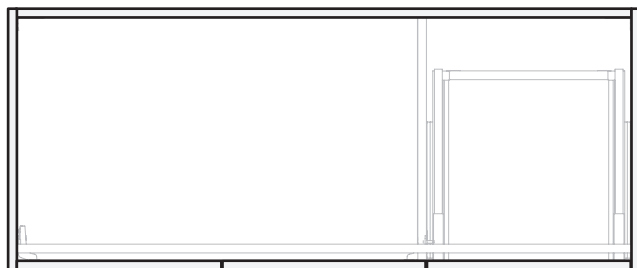
02/02/2024

01/01



CABINET SPECIFICATION

Bella - 1200 - Wall - 2 Door 2 Drawer

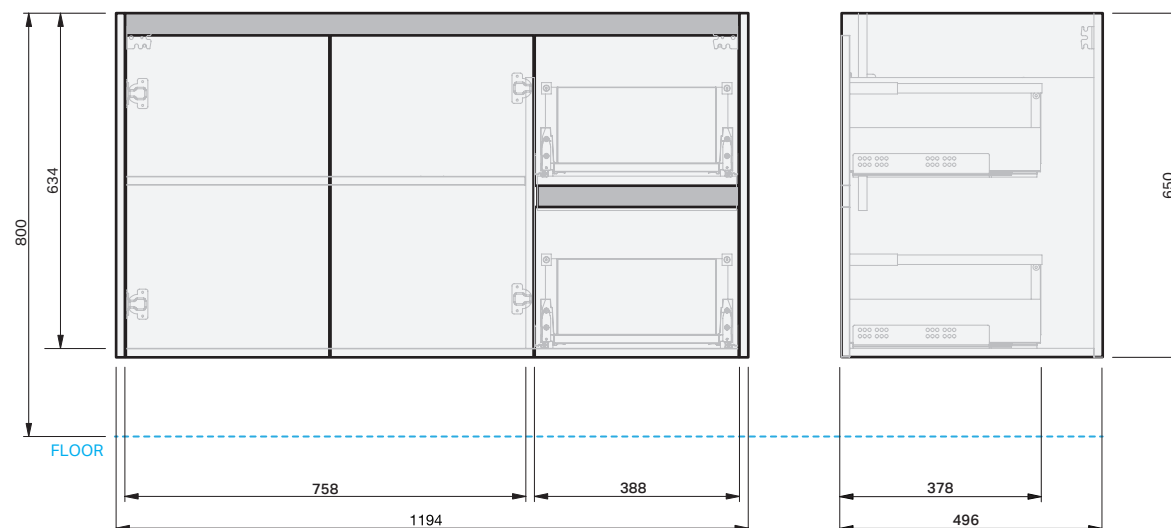


Basin range (refer to applicable basin specification)



LAURETTA

- Drawings depict cabinet only
- It is important to decide on what height you want your finished top surface from the floor, this will determine where your plumbing will be positioned.
- We suggest that you install your wall hung vanity between 830-950mm high to the finished top surface.
- Waste outlet positioned for standard bottle trap and pop up basin waste



30 YEARS



AQUAEDGE



SOFT CLOSE

INDICATES PLUMBING -----

INDICATES FLOOR SURFACE -----

IMPORTANT NOTE: Throughout this guide, dimensions may vary by ± 2 mm. Please read the installation manual for detailed information on installing the product. St. Michel pursues a policy of continuing improvement in design and manufacturing of its products. The right is therefore reserved to vary specifications without notice. For full installation instructions visit stmichel.co.nz.

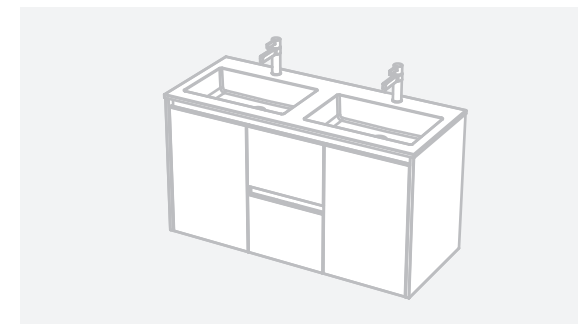
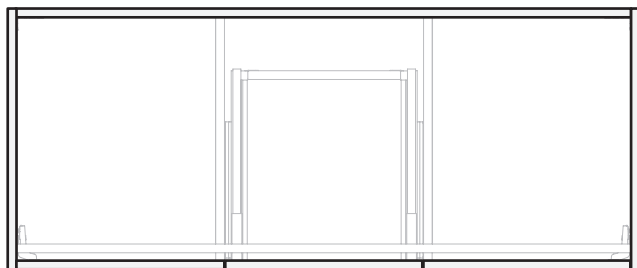
Date edited:

02/02/2024

01/01

CABINET SPECIFICATION

Bella - 1200 - Wall - Double - 2 Door 2 Drawer

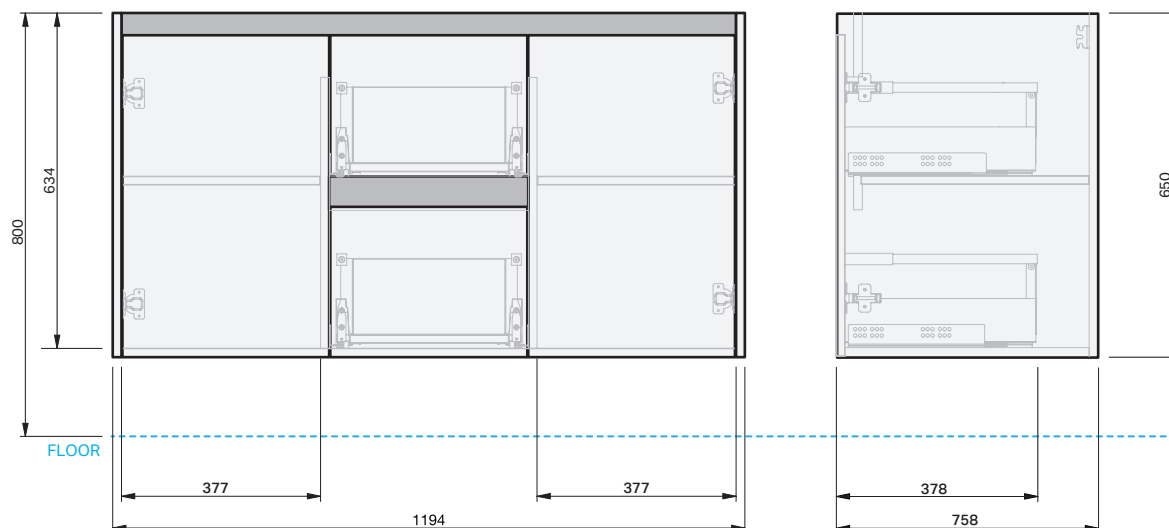


Basin range (refer to applicable basin specification)



LAURETTA

- Drawings depict cabinet only
- It is important to decide on what height you want your finished top surface from the floor, this will determine where your plumbing will be positioned.
- We suggest that you install your wall hung vanity between 830-950mm high to the finished top surface.
- Waste outlet positioned for standard bottle trap and pop up basin waste



30 YEARS



AQUAEDGE



SOFT CLOSE

INDICATES PLUMBING

INDICATES FLOOR SURFACE

IMPORTANT NOTE: Throughout this guide, dimensions may vary by ± 2 mm. Please read the installation manual for detailed information on installing the product. St. Michel pursues a policy of continuing improvement in design and manufacturing of its products. The right is therefore reserved to vary specifications without notice. For full installation instructions visit stmichel.co.nz.

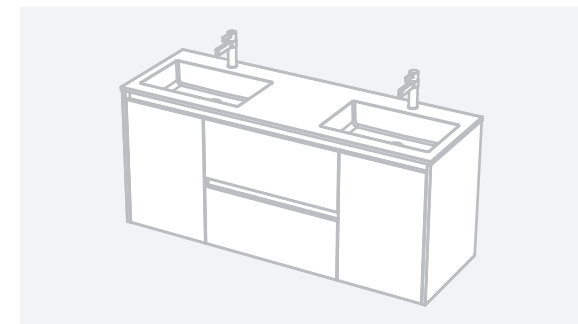
Date edited:

02/02/2024

01/01

CABINET SPECIFICATION

Bella - 1500 - Wall - Double - 2 Door 2 Drawer

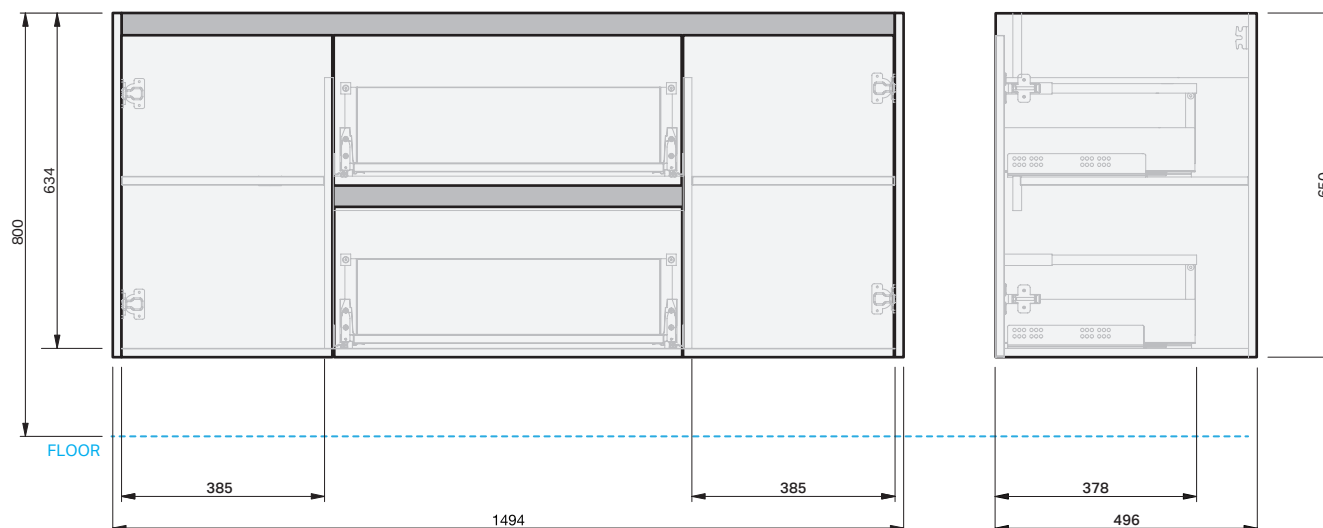


Basin range (refer to applicable basin specification)



LAURETTA

- Drawings depict cabinet only
- It is important to decide on what height you want your finished top surface from the floor, this will determine where your plumbing will be positioned.
- We suggest that you install your wall hung vanity between 830-950mm high to the finished top surface.
- Waste outlet positioned for standard bottle trap and pop up basin waste



30 YEARS



AQUAEDGE



SOFT CLOSE

INDICATES PLUMBING -----

INDICATES FLOOR SURFACE -----

IMPORTANT NOTE: Throughout this guide, dimensions may vary by ± 2 mm. Please read the installation manual for detailed information on installing the product. St. Michel pursues a policy of continuing improvement in design and manufacturing of its products. The right is therefore reserved to vary specifications without notice. For full installation instructions visit stmichel.co.nz.

Date edited:

02/02/2024

01/01