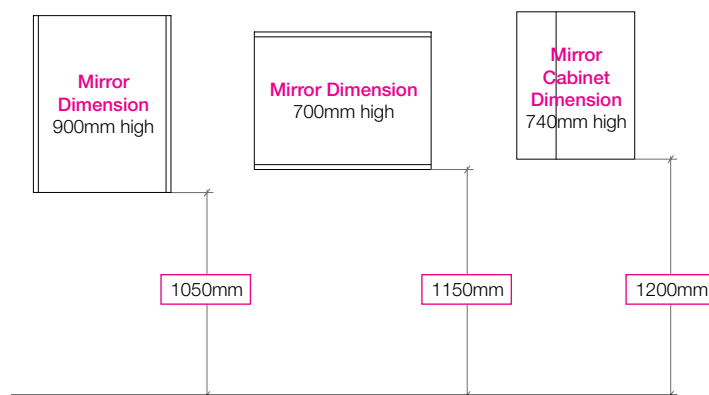
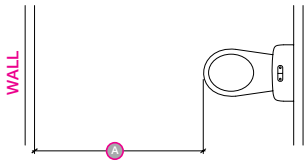

Clearance Guidelines

The following guide will assist you in planning your new bathroom

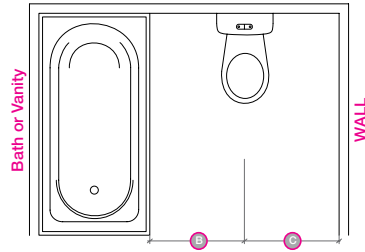
- These Bathroom Clearance Guidelines will help you create a practical working space that maximises the potential of the room you have to work with. By using these measurements you can determine the best furniture, shower, bath and fixture combination for your bathroom.



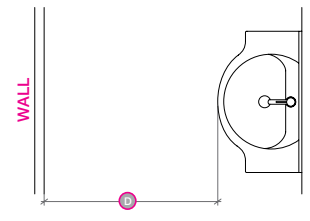
Average fixing heights are supplied, adjust for personal preference
CAUTION: Mirror Cabinet doors need to clear tapware, consider if mounting lower.



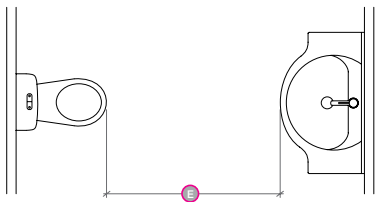
- A Clearance Wall to Toilet Pan**
- 750mm to 1200mm
 - 900mm most practical



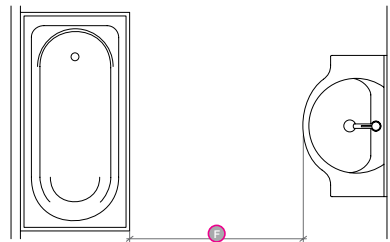
- B Edge of Bath/Vanity to Centre Toilet Pan**
- 400mm to 500mm
 - 500mm most practical
- C Clearance Wall to Centre Pan**
- 400mm to 500mm
 - 500mm most practical



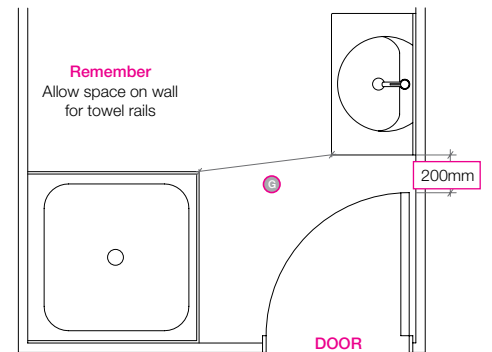
- D Clearance Wall to Basin/Vanity**
- 750mm to 900mm
 - 900mm most practical



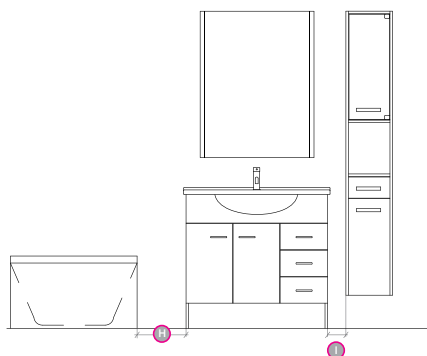
- E Clearance Toilet Pan to Basin/Vanity**
- 750mm to 900mm
 - 900mm most practical



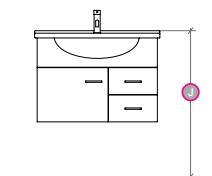
- F Clearance Bath to Basin/Vanity**
- 750mm to 900mm
 - 900mm most practical



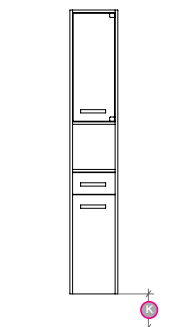
- G Bathroom Access**
- 750mm to 900mm
 - 750mm minimum between fixture(s) for good bathroom access



- H Clearance Bath to Vanity**
- 150mm to 300mm
 - 300mm most practical
- I Clearance Vanity to Side Furniture**
- 75mm to 150mm
 - 100mm most practical



- J Wall Hung Vanities**
- average 870mm
 - adjust for height preference



- K Side Furniture**
- average 200mm
 - adjust for height preference