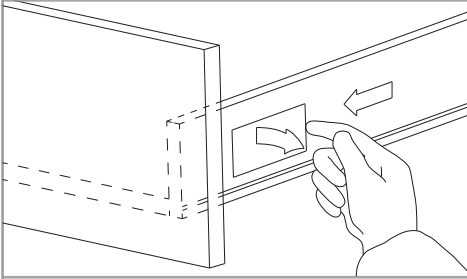


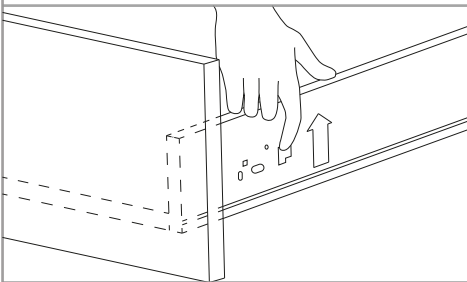
SCOPE (Discontinued)

DRAWER BOX INSTALLATION

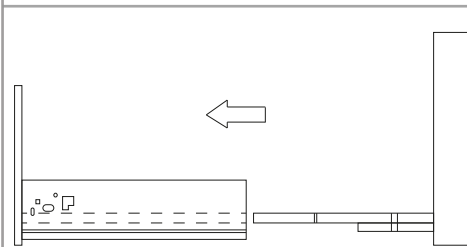
RELEASING DRAWER



To release a drawer from the cabinet, remove both the left hand and right hand cover caps on the drawer unit.

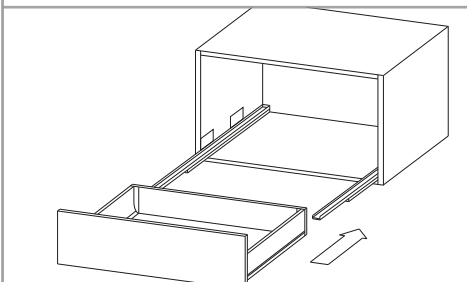


Push rear lever upwards on both sides of the drawer unit at the same time.

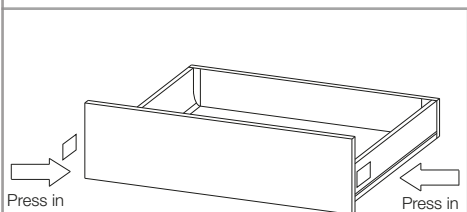


At the same time as lifting the rear levers, pull the drawer out. This will release the drawer from the cabinet runners.

REFITTING DRAWER



To refit a drawer to the cabinet, align the drawer onto the runners. Push the drawer into the cabinet on the runners. You will hear a 'click' as the runners and drawer locate.



Press the side cover caps onto the drawer sides when finished.